

AAA/SWITCH

How to submit and execute projects



SWITCH

Serving Swiss Universities

Christoph Witzig

christoph.witzig@switch.ch

Outline

- How to submit a project?
- How is a project executed?
- What do I have to do next?

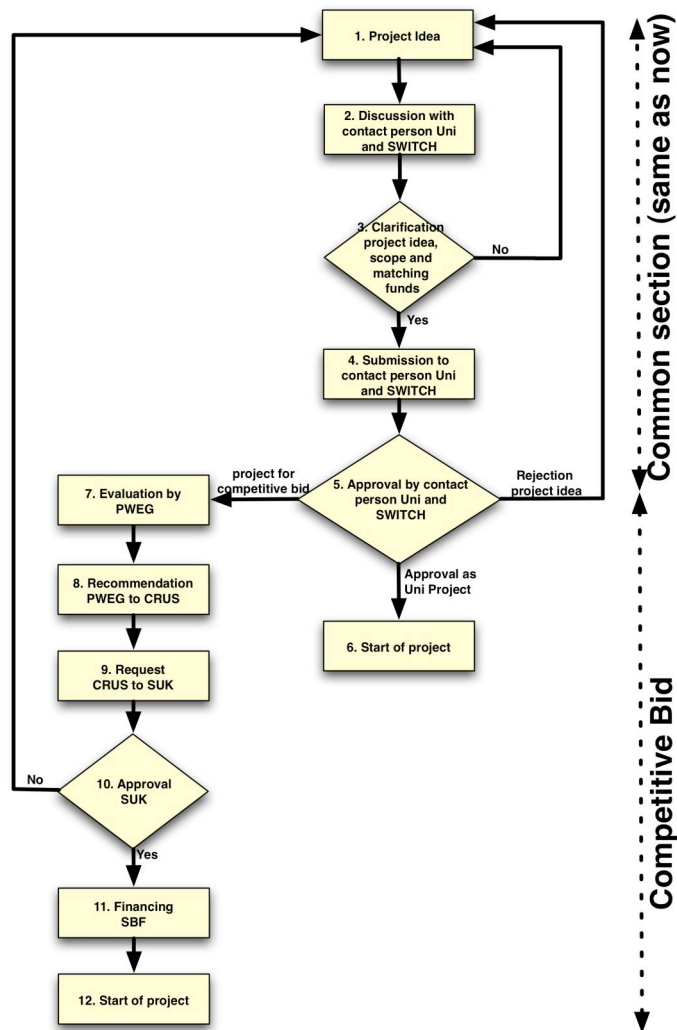
Project Guidelines

- Give detailed instructions how to submit and report AAA/SWITCH projects
- Projects are submitted by delivering a project description
- Project management through submission of a short quarterly project report
- Guidelines for cantonal universities and ETH-Domain are released
 - Universities of Applied Sciences to follow soon
- Downloadable from AAA/SWITCH website <http://www.switch.ch/aaa>

Project Submission (1/4)

- Different for University projects and projects in the competitive bid
- Contact persons:
 - Institutions: every institution has one contact point nominated by the head of the IT department
 - SWITCH:
 - Christoph Graf: Responsible for AAA/SWITCH project as member of SWITCH management
 - Christoph Witzig: Project leader
- Project is submitted by a “project description”

Project Submission (2/4)



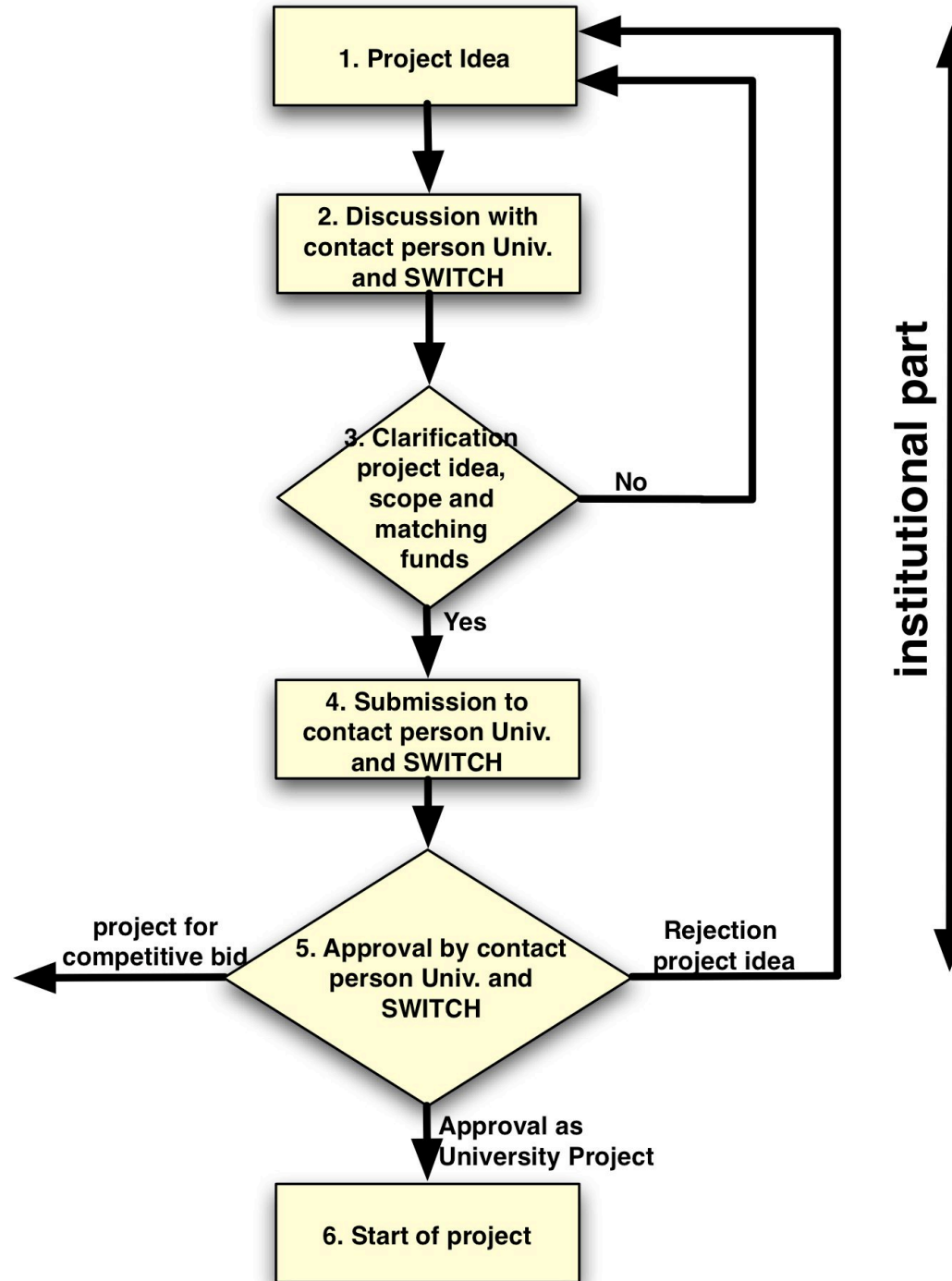
Common part: (next slide)

- Same as in current SUC projects
- Approved jointly by contact person of university and SWITCH project responsible

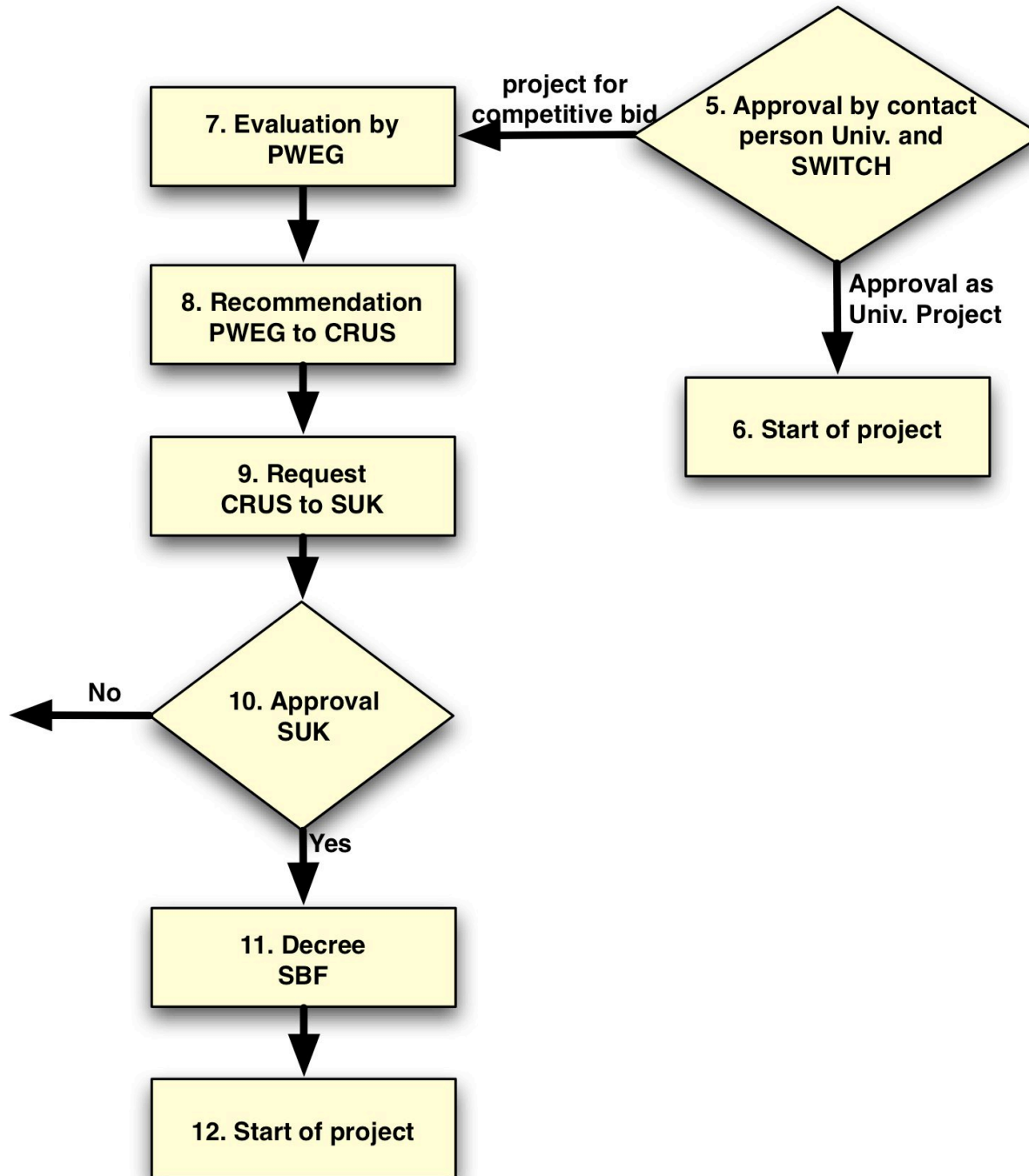
Competitiv bid: (slide after next)

- New part of SWITCH SUC project
- Comprises an evaluation by a committee
- Involves external bodies (CRUS, SUC, SBF, ETH-Rat, KFH, BBT)

Project Submission (3/4)



Project Submission (4/4)



Criteria for Evaluating Projects (not in order of priority)

1. Matching funds exist
2. Benefit by the project for the end users
3. Cooperation aspect
4. Innovation character
5. Sustainability of the solution
6. Quality of the project management

Contact Persons at Institutions (1/4)

Institution	Contact	Email
Univ. Basel	Fritz Roesel, Dieter Glatz	fritz.roesel@unibas.ch, dieter.glatz@unibas.ch
Univ. Berne	Ueli Kienholz	ueli.kienholz@id.unibe.ch
Univ. Fribourg	Monique Bersier	monique.bersier@unifr.ch
Univ. Geneve	Pierre-Yves Buergi	Pierre-Yves.Burgi@adm.unige.ch
Univ. Lausanne	Alexandre Roy	Alexandre.Roy@unil.ch
Univ. Luzern	Marco Antonini	Marco.Antonini@unilu.ch
Univ. Neuchatel	Matthias Rufer	mathias.rufer@unine.ch
Univ. St. Gallen	Kurt Grabher	kurt.grabher@unisg.ch
Univ. Svizzera Italiana	Mario Gay	m.gay@ti-edu.ch
Univ. Zurich	Alexander Godknecht	alexander.godknecht@id.uzh.ch

Contact Persons at Institutions (2/4)

Institution	Contact	Email
EPF Lausanne	Pierre Mellier	pierre.mellier@epfl.ch
ETH Zürich	Andreas Dudler	adudler@ethz.ch
CSCS	Dominik Ulmer	dulmer@cscs.ch
EAWAG	Gabriel Piepke	gabriel.piepke@eawag.ch
EMPA	Christoph Bucher	christoph.bucher@empa.ch
PSI	Stephan Egli	stephan.egli@psi.ch
WSL	Dieter Jost	dieter.jost@wsl.ch

Contact Persons at Institutions (3/4)

Institution	Contact	Email
Univ. Applied Sciences	TBA	

Contact Persons at Institutions (4/4)

Institution	Contact	Email
SWITCH (Project responsible)	Christoph Graf	christoph.graf@switch.ch
SWITCH (Project leader)	Christoph Witzig	christoph.witzig@switch.ch

**For technical discussions at SWITCH
(SWITCH may be actively involved in projects)**

AAA/SWITCH Domain	Technical Contact	Email
AAA	Patrik Schnellmann	aaa-aaa@switch.ch
Grid	Christoph Witzig	aaa-grid@switch.ch
e-Learning	Rolf Brugger	aaa-els@switch.ch
VO Support	Martin Sutter	aaa-vo@switch.ch

Timelines for project submission - ETH

Date	Deadline
30.4.2008 [09,10] 31.10.2008 [09,10]	Submission of projects
May/Juni 2008 [09,10] Nov/Dec 2008 [09,10]	Evaluation of PWEG
30.6.2008 [09,10] 15.12.2008 [09,10]	Recommendation from PWEG to ETH-Rat
Juli 2008 [09,10] January 2009 [10, 11]	Decision ETH Rat
August 2008 [09,10] February 2009 [10, 11]	Start of project

Timelines for project submission - Cantonal Universities

Date	Deadline
30.4.2008 [09,10] 31.10.2008 [09,10]	Submission of projects
May/Juni 2008 [09,10]	Evaluation of PWEG
30.6.2008 [09,10]	Recommendation from PWEG to CRUS
September 2008 [09,10]	CRUS
October 2008 [09,10]	SUC, SBF
January 2009 [10,11]	Start of project

Timelines for project submission - UAS

Date	Deadline
30.4.2008 [09,10] 31.10.2008 [09,10]	Submission of projects
May/Juni 2008 [09,10] Nov/Dec 2008 [09,10]	Evaluation of PWEG
30.6.2008 [09,10] 15.12.2008 [09,10]	Recommendation from PWEG to KFH
Juli/Aug 2008 [09,10] Jan/Feb 2009 [10, 11]	KFH / BBT
Sept 2008 [09,10] Mar 2009 [10, 11]	Start of project

How to execute projects?

- Projects
 - submit a short quarterly project report to SWITCH
 - comment on progress and milestones
- University contact person and SWITCH:
 - In spring and fall SWITCH will visit the contact person for every university to discuss status of projects and discuss new projects
 - In summer each institution submits a short financial summary to SWITCH
- SWITCH and external bodies
 - At the end of every year each institution submits a short financial summary to SWITCH
 - SWITCH submits a full report to external bodies (CRUS, SUC, SBF, KFH, BBT, ETH-RAT)

Next Steps ...

- From now on: Project proposals can be discussed and submitted
- April 1, 2008: Start of program
- April 30, 2008: Submission of projects in the competitive bid
- April/May: Visit of SWITCH at Universities, approval of projects
- Aug/Sept/Jan: Start of competitive projects

AAA/SWITCH Summary



SWITCH

Serving Swiss Universities

Christoph Witzig

christoph.witzig@switch.ch

Summary (1/2)

- Introduction AAI 2004-2007 and AAA/SWITCH 2008-2011
- Presentation of the four domains targeted by AAA/SWITCH
- Discussion and summary of project ideas
- Reports by Universities on AAI 2004-2007
- How to submit and execute projects within AAA/SWITCH

Summary (2/2)

- Think about projects
- Speak to your contact person and to SWITCH
- Submit projects ...
- ... and carry them out

- AAA/SWITCH Info Day as a yearly networking event between project participants