

Our Identity Neighbourhood



SWITCH

Christoph Graf

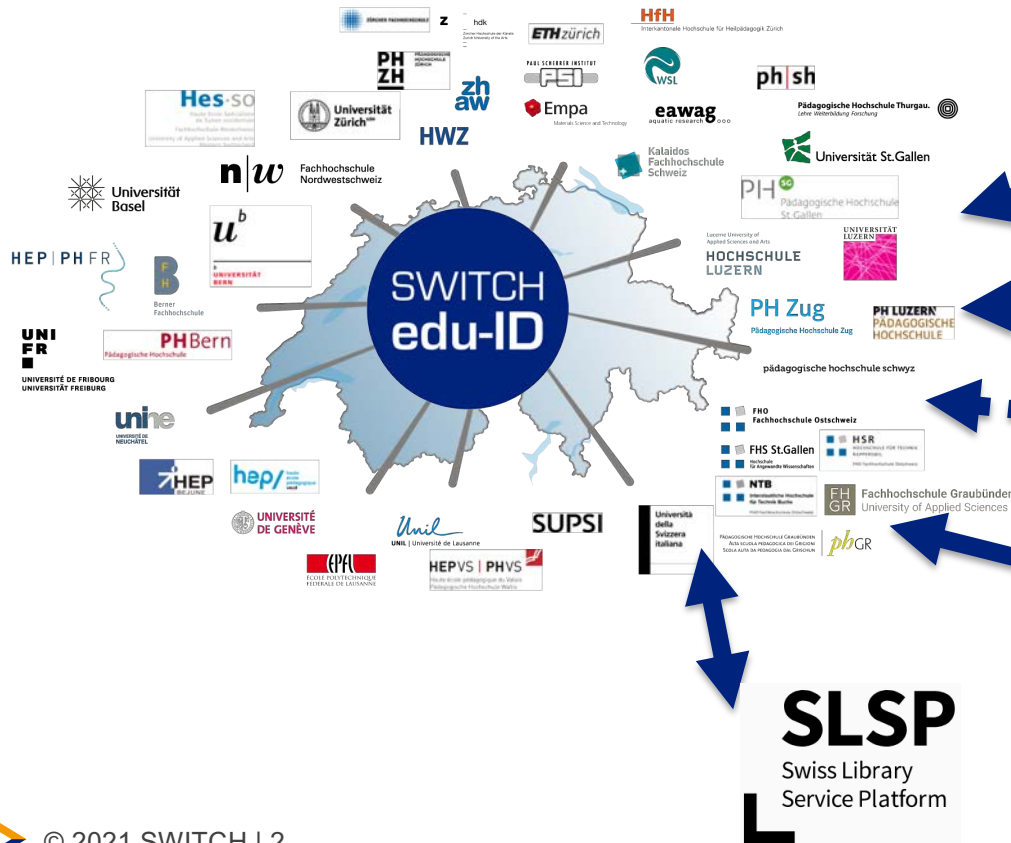
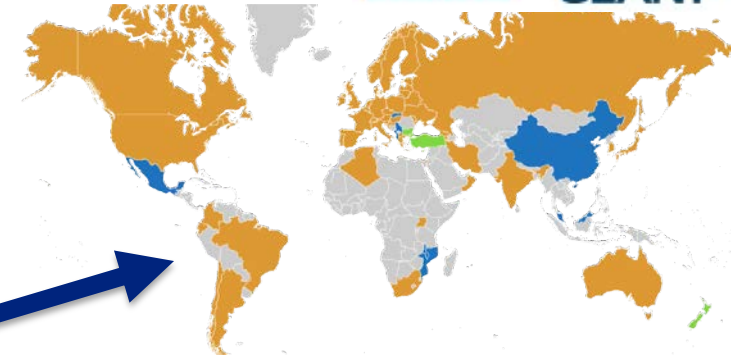
christoph.graf@switch.ch

TRID WG Meeting, 26.5.2021

The identity neighbourhood

SWITCH

Supporting global research collaboration

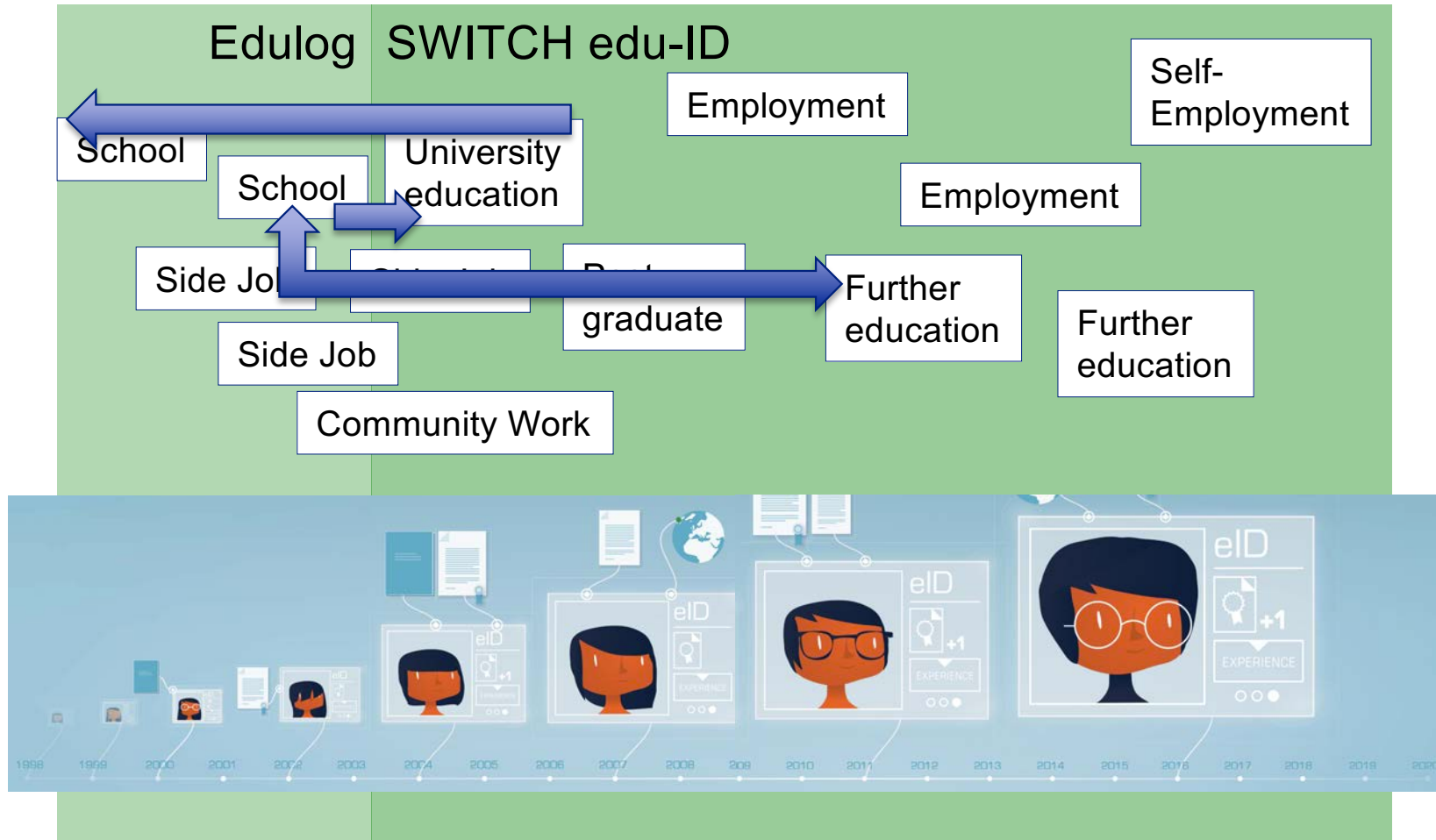


Föderation der Identitätsdienste im Bildungsraum Schweiz
 Fédération des services d'identité de l'espace suisse de formation
 Federazione dei servizi di identità nello spazio formativo svizzero
 Federaziun dals servetschs d'identitad en il spazi da furmaziun svizzer

À propos d'Edulog

Sélectionner une catégo... ▼





E-ID/SSI

- E-ID law rejected by popular vote March 2021
 - our interpretation: It's a no to "this E-ID", but "a better E-ID" might be ok
- Position of SWITCH
 - wants to offer access to a future E-ID by means of the edu-ID
 - wants to foster its values in a future E-ID: security/data protection, empowerment of users, innovation capability
 - willing to offer its identity-knowhow to the Swiss society
 - prepared to offer its services, if option arises
- SSI (Self-sovereign identities)
 - Currently being discussed as guiding principle for E-ID approach #2
 - SWITCH is assessing those principles also in the context of the edu-ID. See: <https://www.switch.ch/stories/Bring-your-own-identity/>