



Integration Scenarios

Integrating the SWITCH edu-ID at a University

SWITCH

Rolf Brugger
eduid@switch.ch

Bern, 28.6.2017

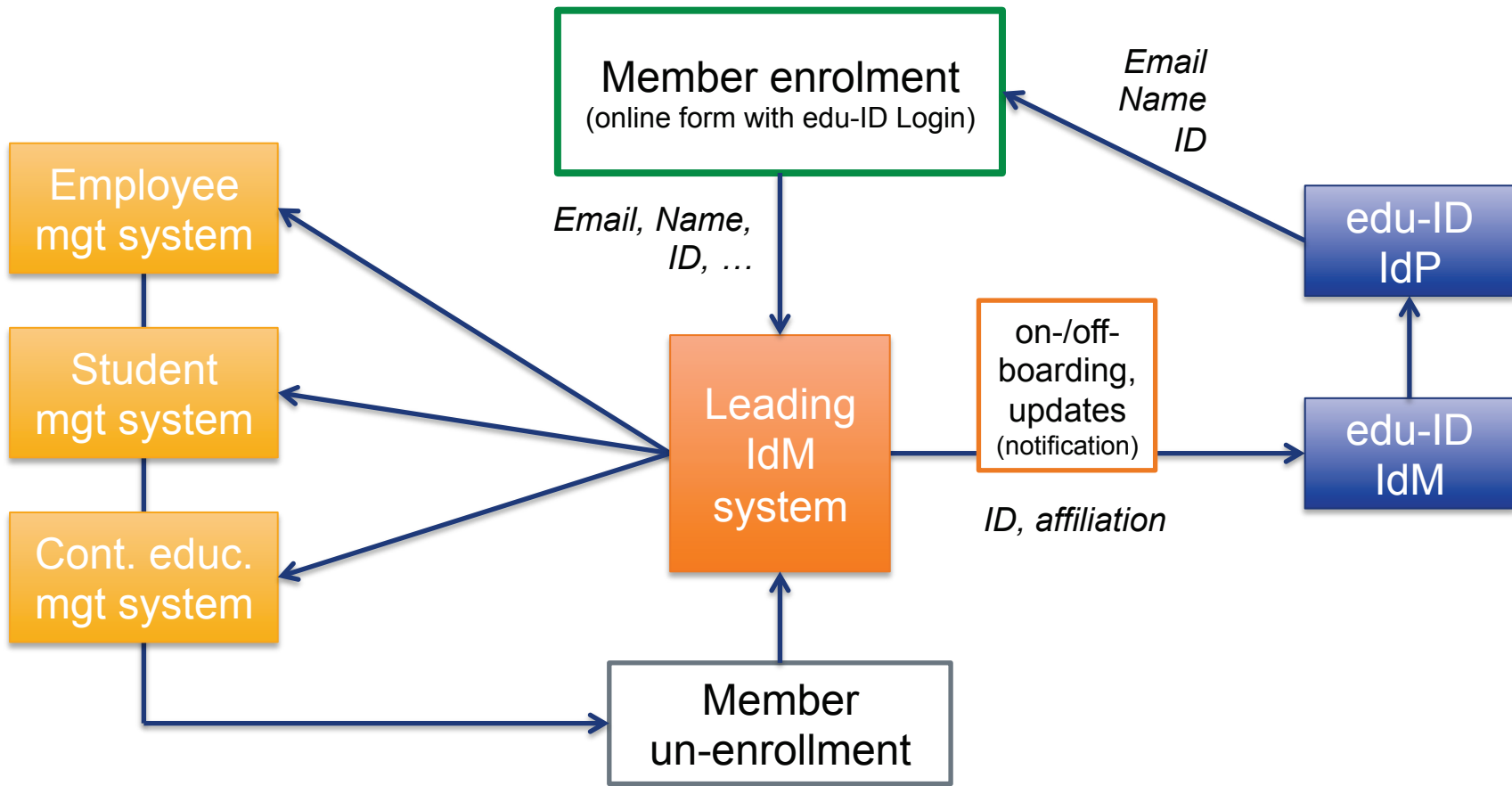
Adoption Path for an Organization

- API: Organization notifies edu-ID about new affiliations
- API: edu-ID knows current attributes for a person
 - edu-ID requests current attributes when they are needed (polling)
 - Organization notifies edu-ID about attribute changes (pushing)
- Make sure all organization members ...
 - Have an edu-ID
 - Linked to organizational identity
 - Current and future members
- Shut down local Shib-IdP

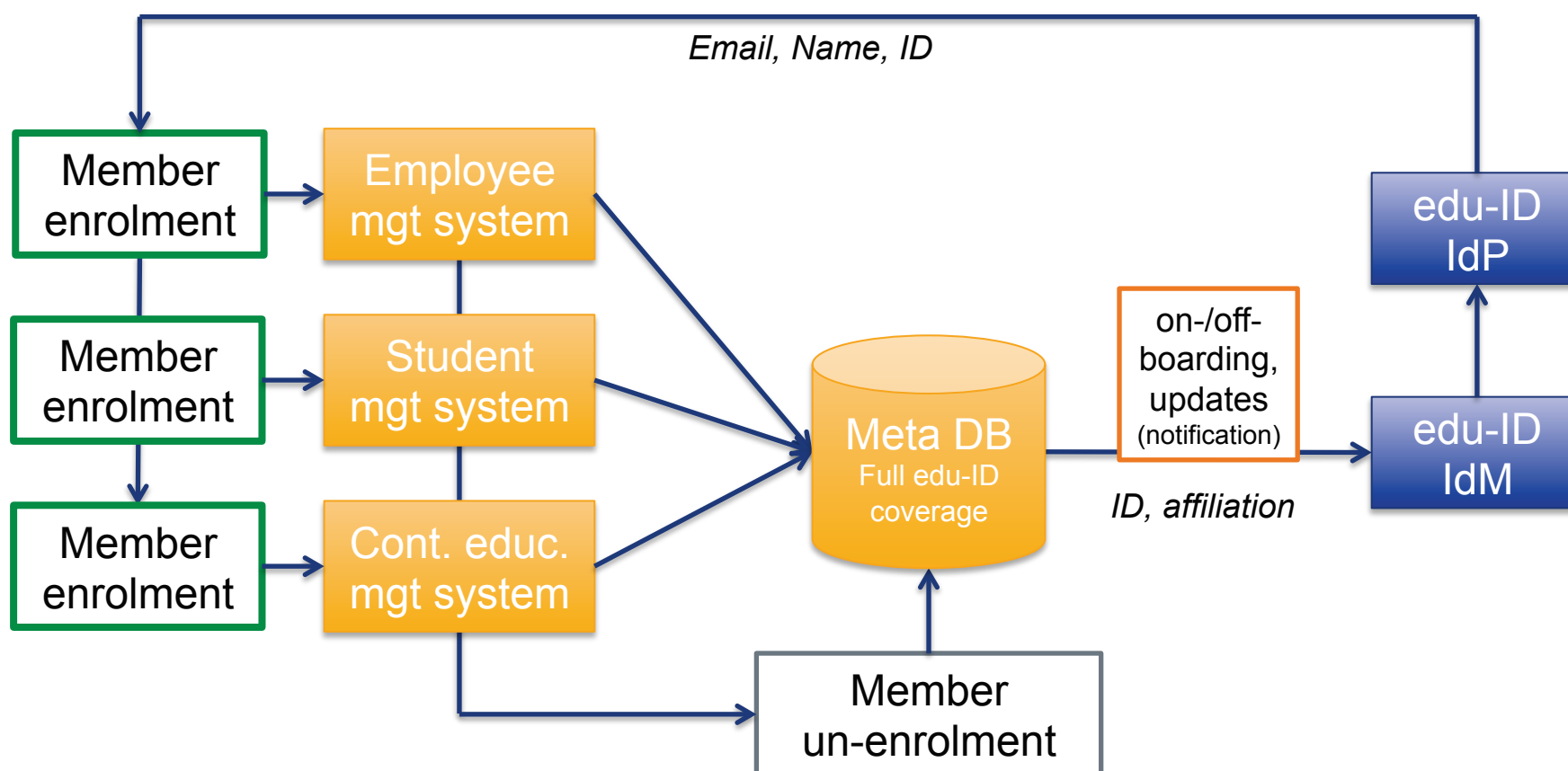
Common
edu-ID identifier

Onboarding of new (future) Users, Offboarding and Attribute Updates

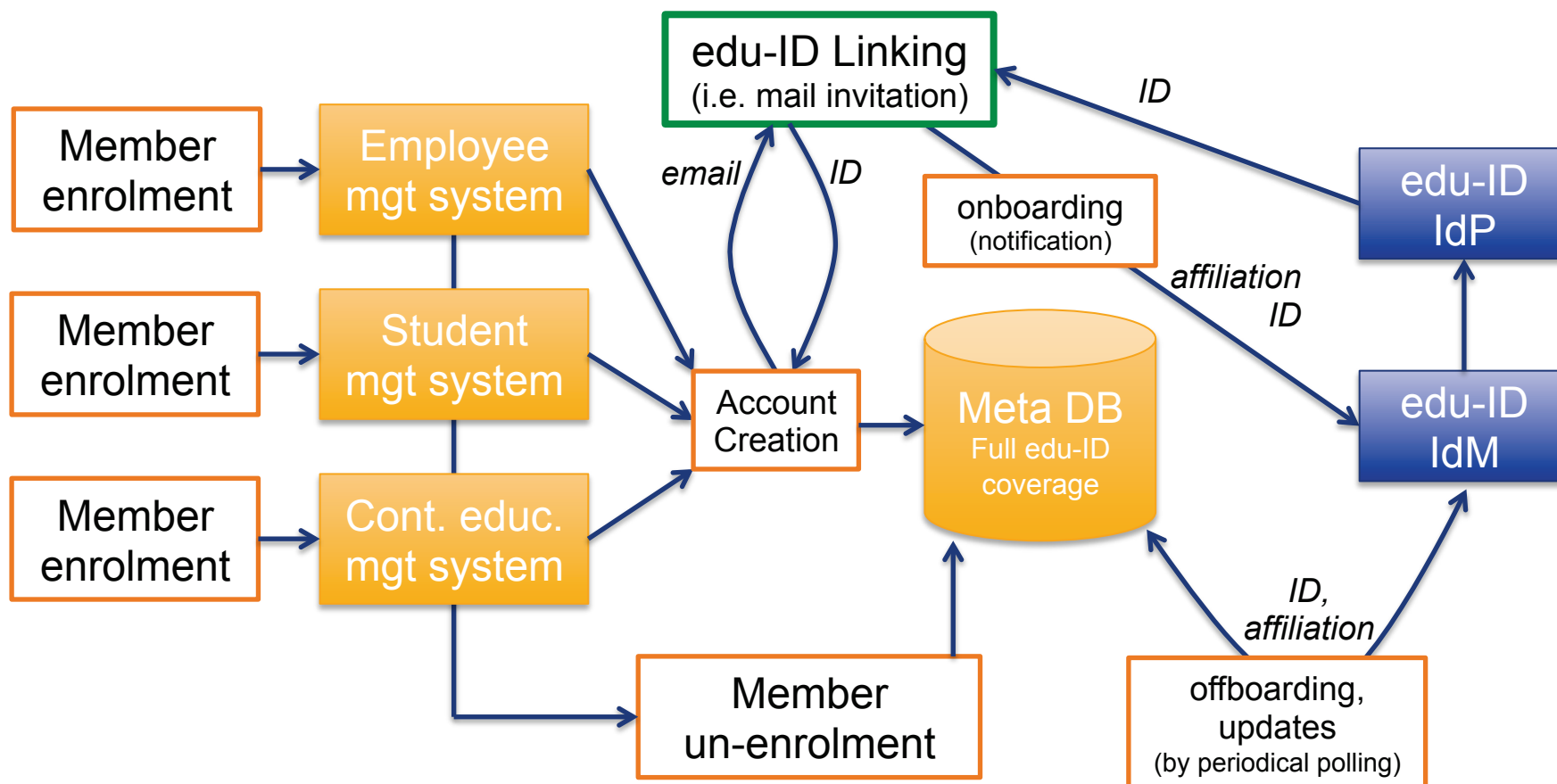
On-/off-boarding in the “Leading System”^{SWITCH} approach



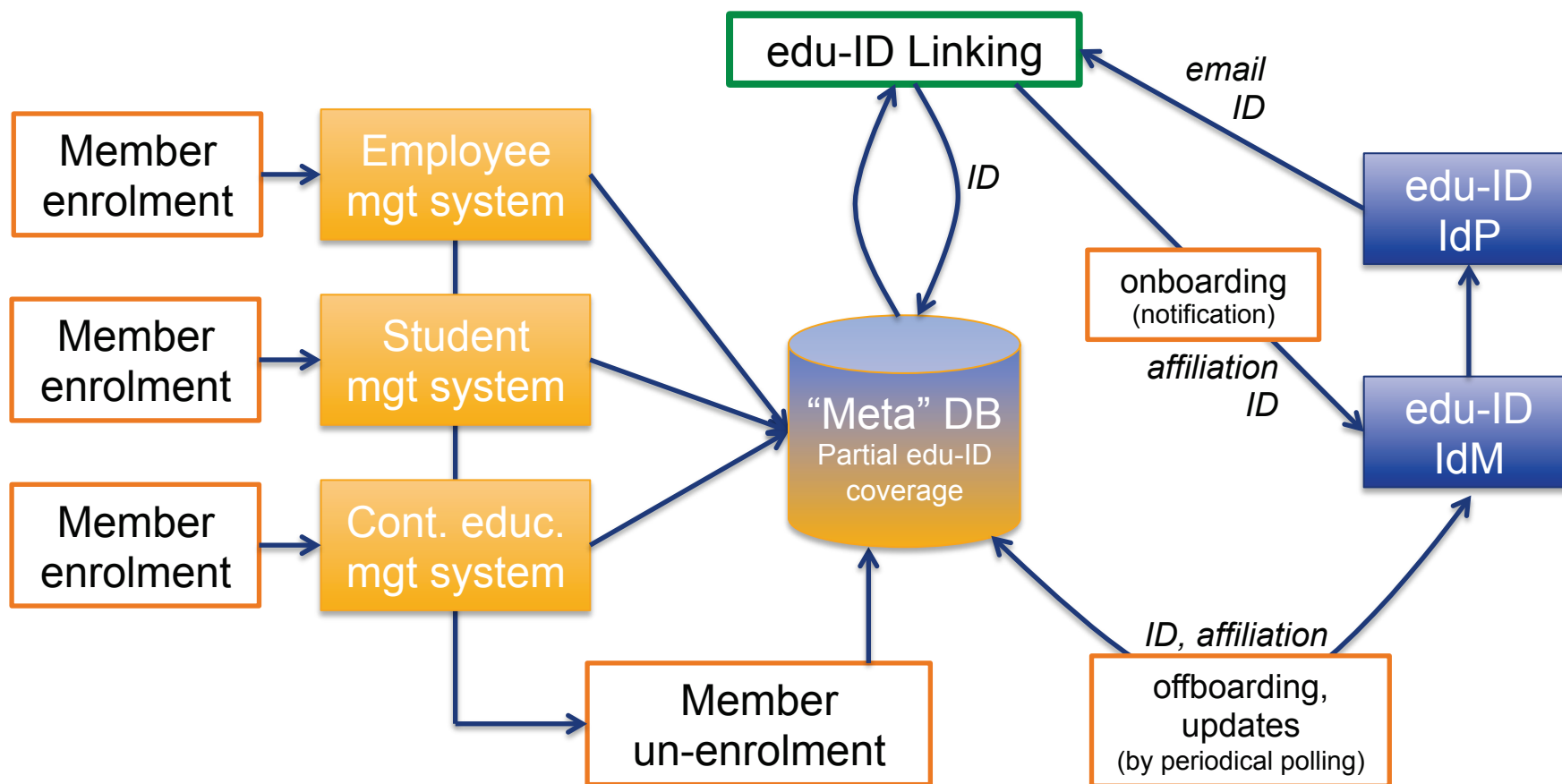
Decentral On-/off-boarding in the “Meta Directory” approach



Centralized On-/off-boarding in the “Meta Directory” approach (synchronous)



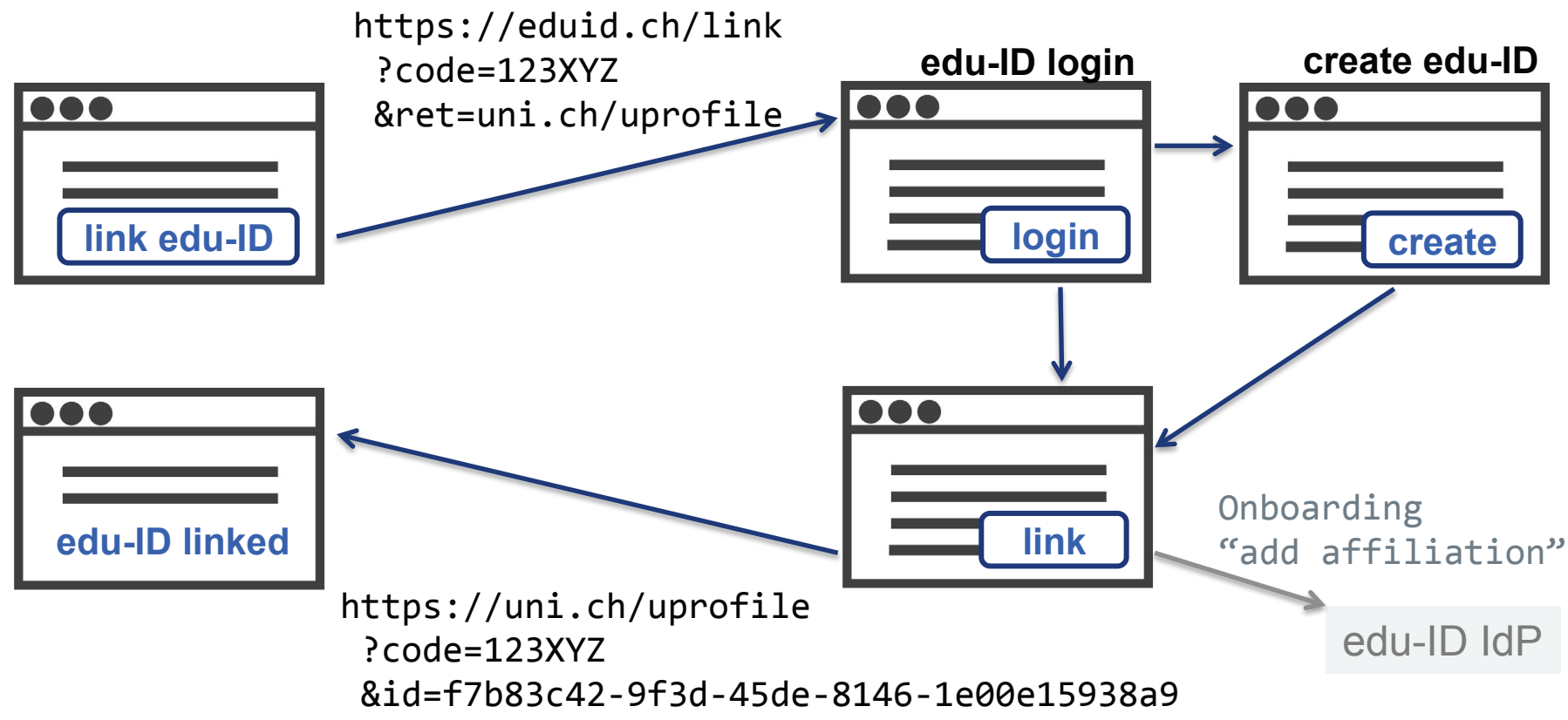
Centralized On-/off-boarding in the “Meta Directory” approach (asynchronous)



edu-ID Linking Page

University:
user profile

SWITCH edu-ID



API to Update Affiliation Status (SCIM)

- Organization informs edu-ID IdP about affiliation changes
 - Add/remove affiliation
 - Update affiliation (attribute push as alternative to attribute polling)
- SCIM REST API (Draft)

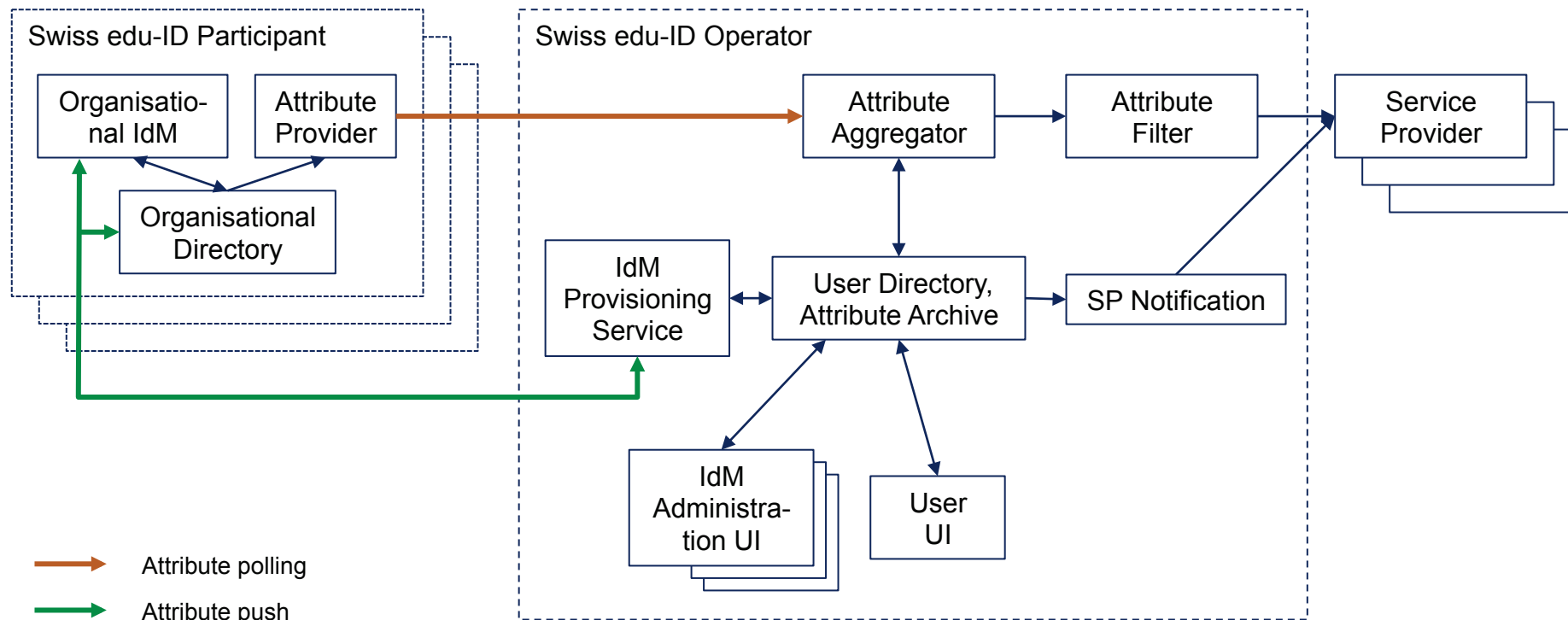
Add an affiliation:

```
PUT https://eduid.ch/api/v1/Users/04111fb2-5e82-4b20-81bf-fa0f4f86aa07
{
  swissEduIDLinkedAffiliation:"student@organization.org",
  swissEduIDAffiliationPeriodBegin:"2017-12-01"
}
```

Remove an affiliation:

```
PUT https://eduid.ch/api/v1/Users/04111fb2-5e82-4b20-81bf-fa0f4f86aa07
{
  swissEduIDAffiliationPeriodEnd:"2017-12-01"
}
```

Basic Components - Simplified



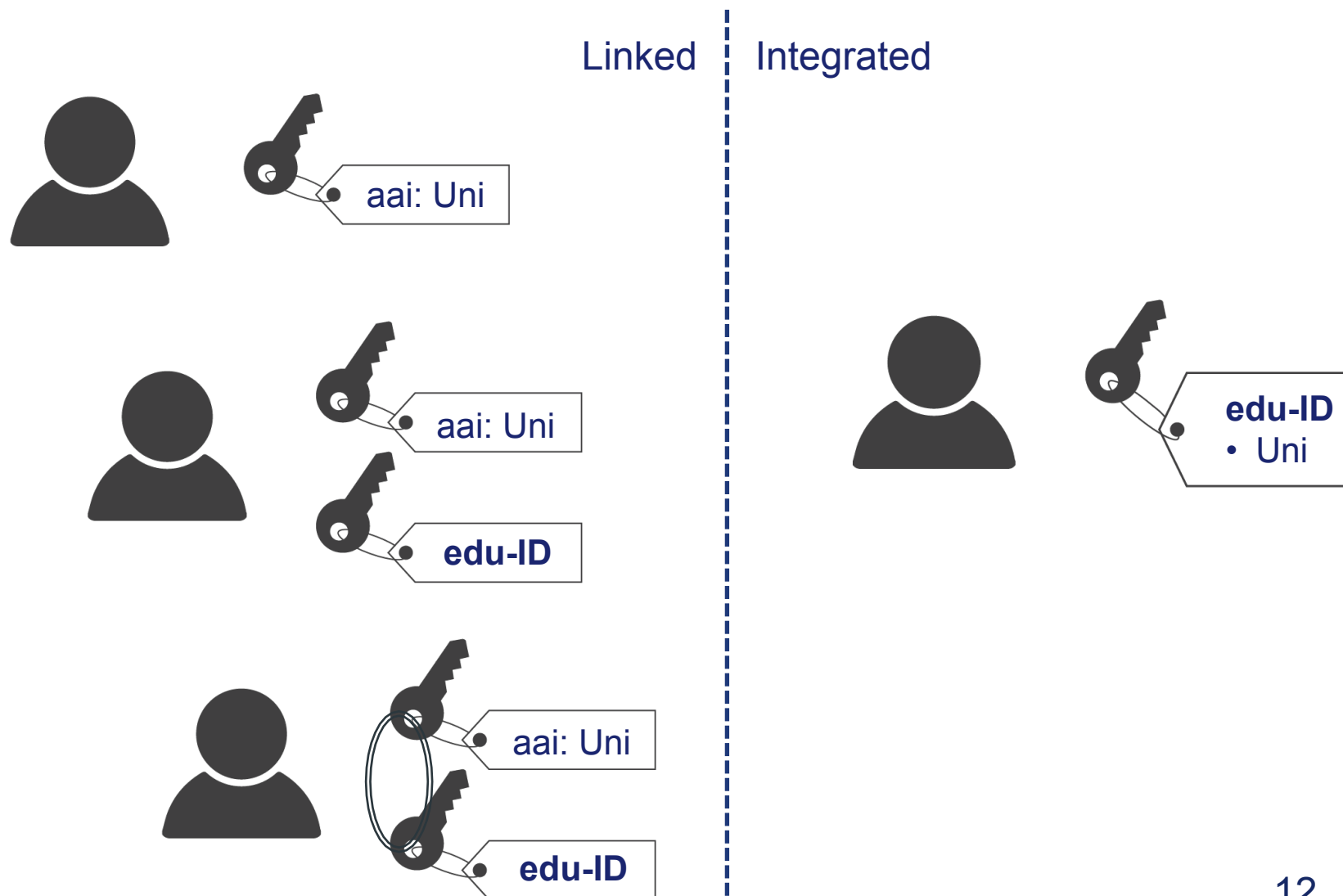
Participants

SWITCH

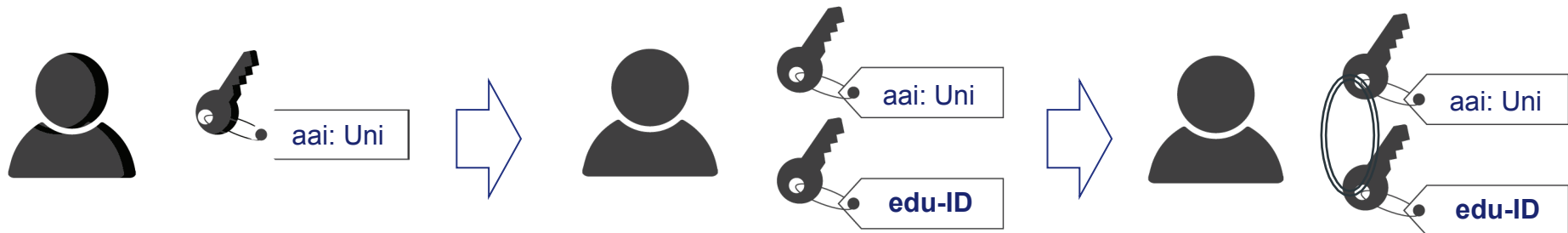
Participants and Federation Partners

Equip all Current Organization Members with an edu-ID

Adoption Path



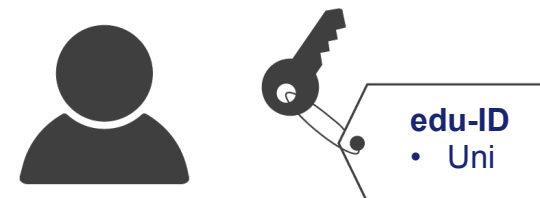
Scenario 1: Involve all Users before Day X



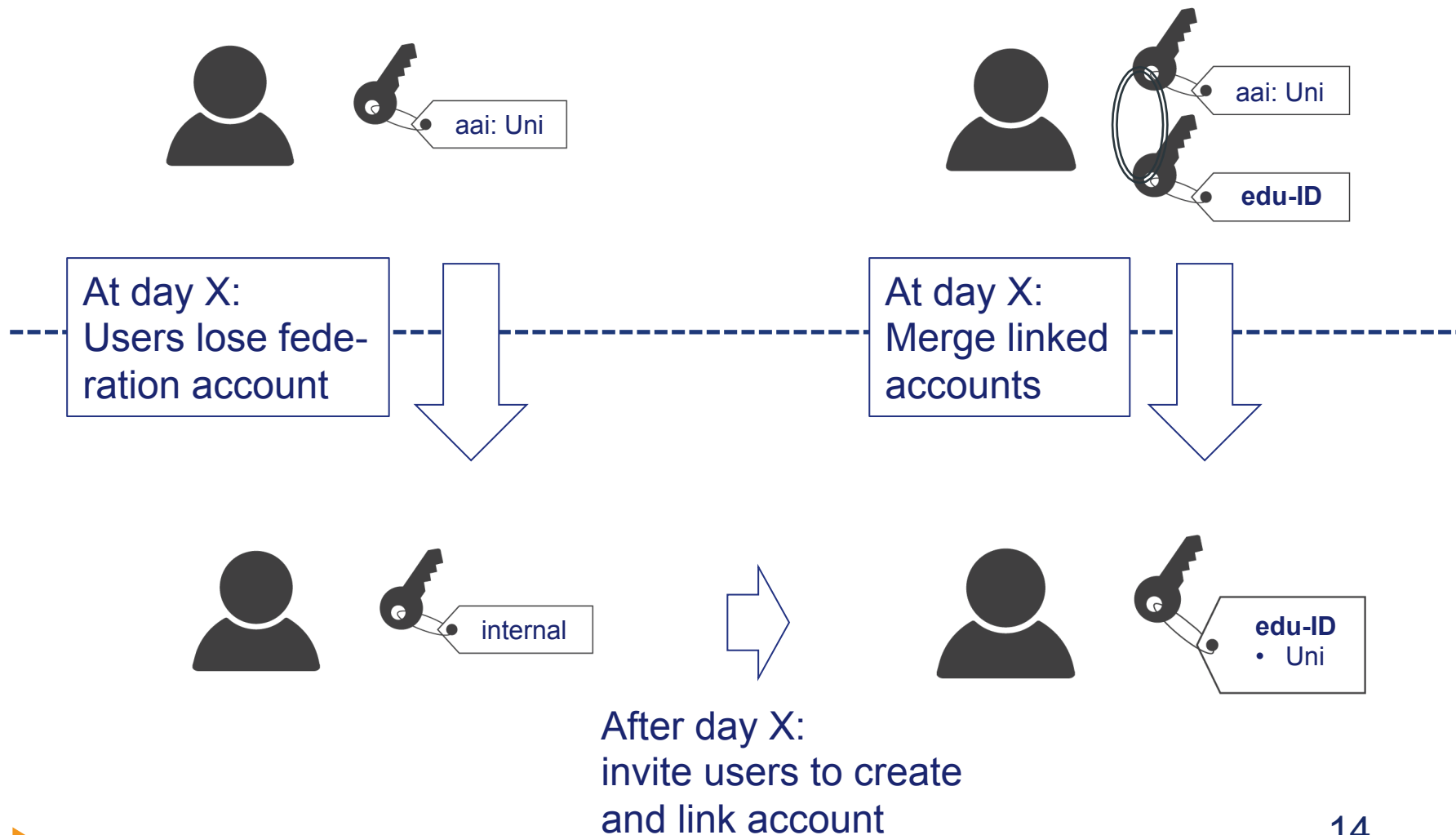
Preparation: invite users to create and link edu-ID account

At day X:
Merge linked
accounts

Before day X: linked accounts
have limited functionality.
Users can't access to classic
SPs as Org-members.



Scenario 2: Involve Users after Day X



Scenario 3: create edu-ID for Users

